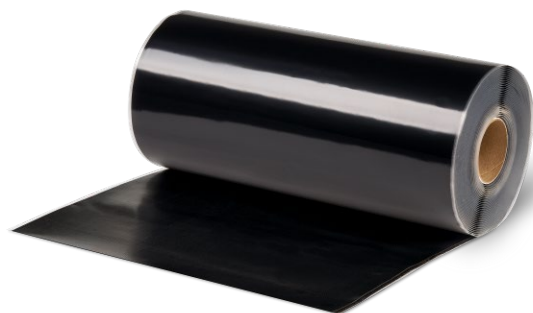


SOPRAGUARD SA FLASHING

DESCRIPTION

The Sopraguard SA Flashing 457 mm (18") self-adhesive membrane consists of a non-reinforced EPDM membrane, with a thickness of 1.5 mm, fully laminated to a self-adhesive tape.

It has an easy-to-separate protective film and excellent weather resistance. The Sopraguard SA Flashing tape can be used to easily cover details where vulcanized EPDM is needed: curves, upstands, gutters, repairs on EPDM roofs, repairs on metal roofs, drains and protruding pipework.



ADVANTAGES

- High weather resistance, ozone and UV radiation.
- Flexibility in extreme temperatures.
- Applicable under temperatures between -20 °C and 50 °C.
- Great adhesion to suitable substrates.

PREPARATION

- The application surface must be clean, dry and free of aggressive elements before applying the Sopraguard Primer.
- If the product has been exposed to temperatures lower than 15 °C for hours, it must be brought back to room temperature before use.

APPLICATION INSTRUCTIONS

- Once the primer is dry, position the Sopraguard SA Flashing tape on primed membrane.
- Remove the protective film while pressing on it with your hand.
- Apply pressure to the entire surface with the silicon roller.
- Apply only in one or two dimensions.
- Once the tape has been applied, seal the visible edges with the sealing adhesive Bond HT.

PRESENTATION, STORAGE AND SHELF LIFE

	SOPRAGUARD SA FLASHING
Presentation	It is served in rolls of 457 mm width and 15.25 m length.
Storage	Store in its original packaging and unopened, in a covered, ventilated location and at temperatures between 15 °C and 25 °C. The material must be kept dry and not exposed to direct sunlight until the time of installation.
Shelf Life	The expiration is 12 months when stored under the aforementioned conditions. Check the manufacturing date on each roll. The actual expiration of the product depends directly on how it has been stored and handled, for example, storage at high temperatures can reduce the period of use with optimal results.

PRECAUTIONS

- Do not smoke while in use.
- Professional use only.
- Use in well-ventilated areas.
- Refer to the Safety Data Sheet.

TECHNICAL SPECIFICATIONS

	EPDM MEMBRANE	SELF-ADHESIVE TAPE
Base	EPDM	Rubber polymers
Colour	Black	Black
Solvents	None	None
Solids	100%	100%
State	Cured	Cured
Thickness	1,5 mm	0,5 mm
Width	457 mm	460 mm
Length	15,25 m	15,25 m

SOPREMA reserves the right to modify the stated data without prior notice and disclaims any liability in case of anomalies caused by improper use of the product.

The values reflected in the technical data sheet correspond to the average values of the tests conducted in our laboratory.

SOPREMA IBERIA SLU c/ Ferro 7, Pol. Ind. Can Pelegrí 08755 Castellbisbal – Barcelona (+34) 93 635 14 00.